

► DWHG SERIES SOLENOID PILOT OPERATED DIRECTIONAL VALVES

DWHG series are solenoid pilot operated spool type valves . This series are used to control the start ,stop and direction of flow.



H	4DWHG10	H	E	60	O	DC24	N	ET	S	Z4	B0.8	P4.5	D1	V	*
---	---------	---	---	----	---	------	---	----	---	----	------	------	----	---	---

No code= 28MPa
H=35MPa

Size 10;16;25;32

No code=spring return
H=Hydraulic return

See the function symbol of spool valve

Series 30=Size 10;Series 60=Size 16-32

O=Without spring return
OF=Without spring return,with detent

DC24=DC24V;AC220=AC220V;AC110=AC110V

No code=Without manual overrides
N=With manual overrides

No code=Externally pilot, externally drained
E=Internally pilot,externally drained
ET=Internally pilot internally drained
T=Externally pilot, internally drained

For further details

No code=NBR seals for petroleum oils
V=FPM seals for phosphate ester

No code=Without ratio pressure reducing valve
D1=With ratio pressure reducing valve (reducing ratio 1:0.66)

No code=Without pilot pressure
P4.5=With pilot pressure cracking pressure is0.45MPa

Omit if without plug-in throttler
B0.8=Throttle orifice size 0.8
B10=Throttle orifice size 1.0
B12=Throttle orifice size 1.2
B15=Throttle orifice size 1.5

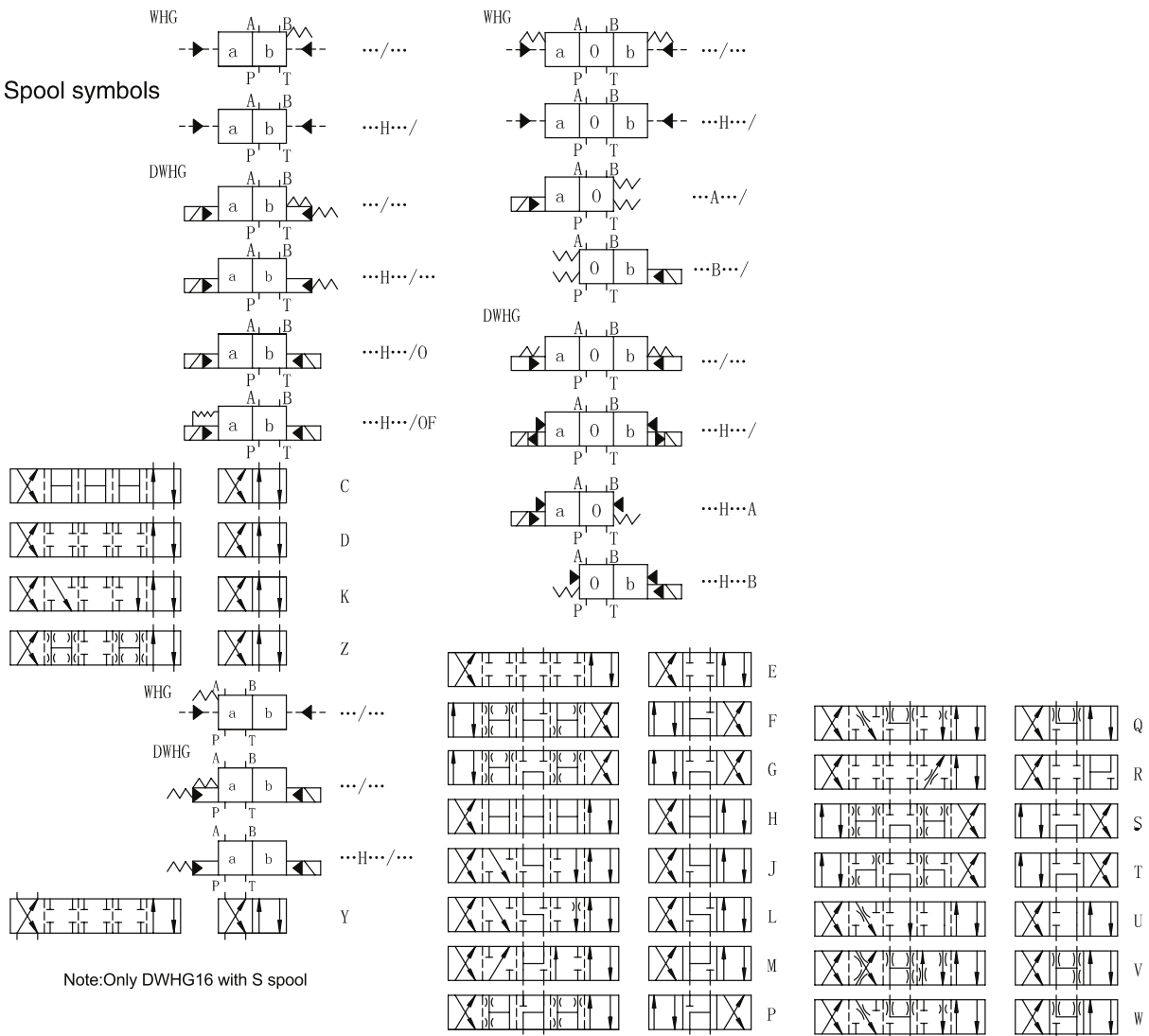
Z4=Quadrate plug Z5=Large quadrate plug

No code=Without pilot adjustment
S=With meter-in pilot adjustment
S2=With meter-out pilot adjustment

► Technical data

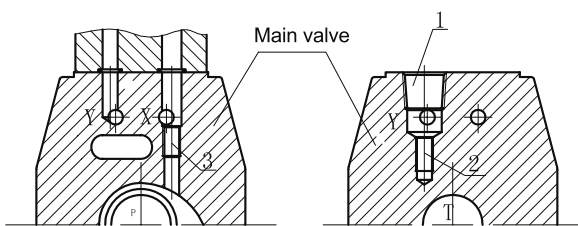
Size	10	16	25	32	
Max operating pressure P.A.B(MPa)	31.5	35	35	35	
T Port(Mpa)	Externally drained	31.5	25	25	25
	Internally drained	AC-10 DC-16	AC-10 DC-16	AC-10 DC-16	AC-10 DC-16
Y Port(Mpa)	Externally drained	AC-10 DC-16	AC-10 DC-16	AC-10 DC-16	AC-10 DC-16
	Min. Pilot pressure (MPa)	0.45-1	0.45-1.3	0.45-1	0.45-1
Max. flow rate(L/min)	160	300	650	1100	

► Spool symbols

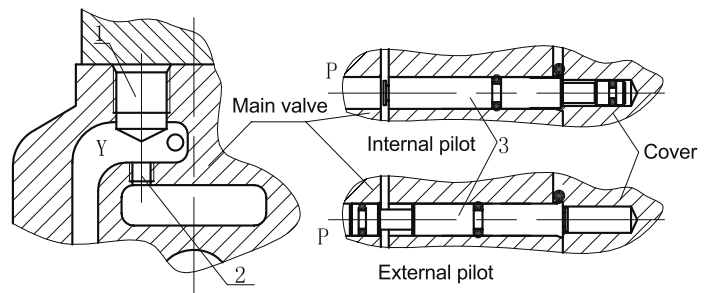


Note: Only DWHG16 with S spool

► Pilot fluid supply



DWHG10 explanation partial drawing



DWHG16 explanation partial drawing

1、DWHG10

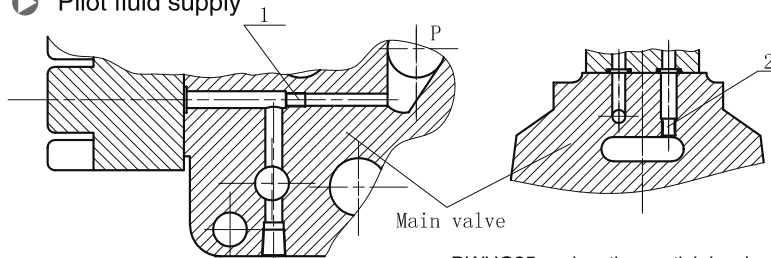
- (1) Internal pilot and external pilot:
 The "P" port with M6 screw 3 is external pilot, to convert valve into internal pilot, the M6 screw 3 must be removed.
- (2) Internal drain and external drain:
 Removing the bolt 1, to install M6 screw 2 is external drain, unscrew the M6 screw 2 is internal drain.

2、DWHG16

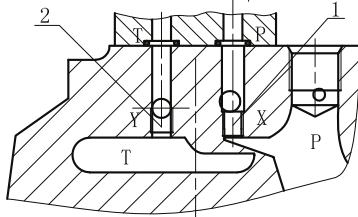
- (1) Internal pilot and external pilot:
 Removing the sideward cover, installing the pin to allow "P" port with open position is internal pilot, to convert the pin into "P" port with plugged position is external drain.
- (2) Internal drain and external drain:
 Removing the bolt 1 and installing M6 screw 2 is external drain, unscrew the M6 screw 2 is internal drain.

DWHG SERIES SOLENOID PILTO OPERATED DIRECTIONAL VALVES

Pilot fluid supply



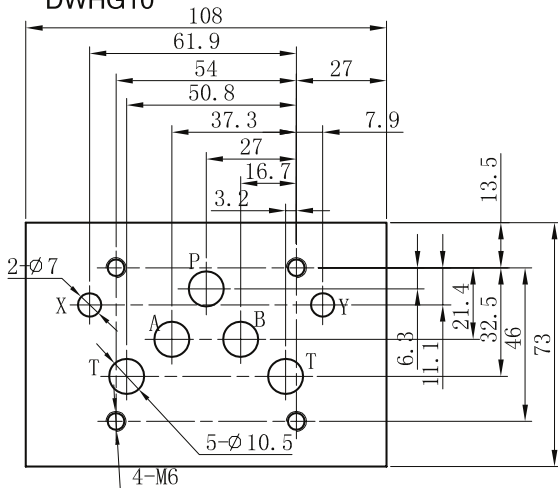
DWGH25 explanation partial drawing



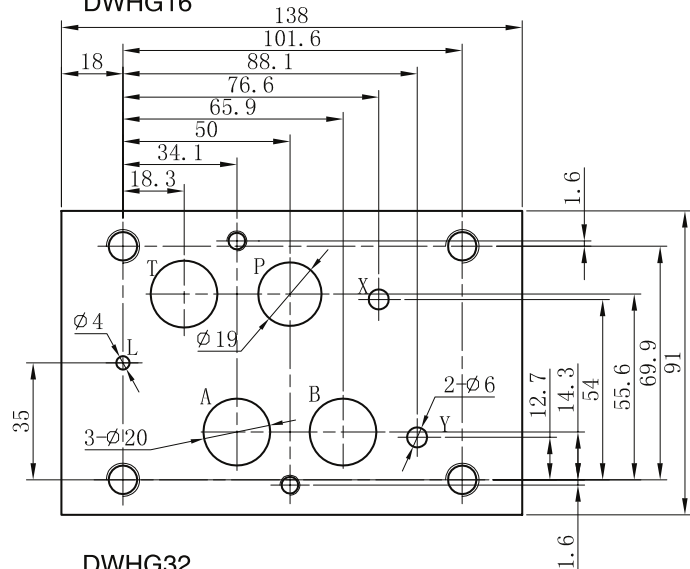
DWGH32 explanation partial drawing

Installation dimensions

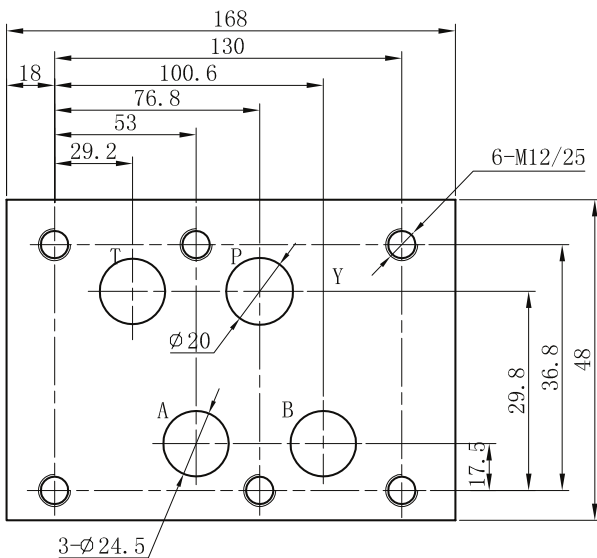
DWGH10



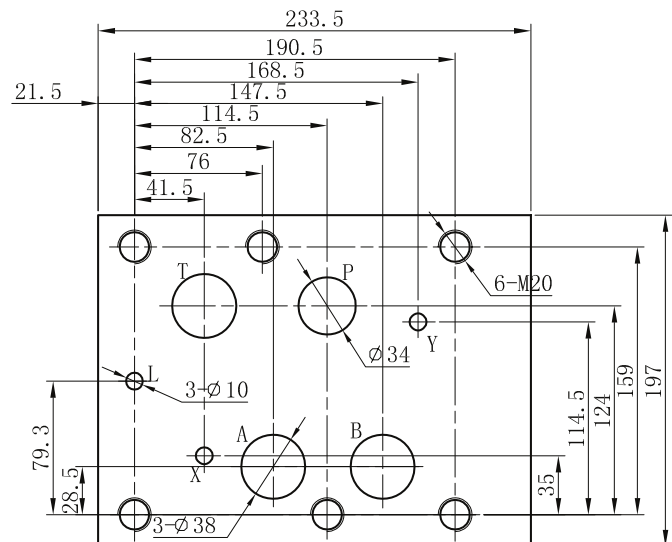
DWGH16



DWGH25



DWGH32



3、WEH25

(1) Internal pilot and external pilot:
 Removing the sideward cover, installing M6 screw 1 is external pilot, unscrew the M6 screw 2 is internal pilot.

(2) Internal drain and external drain:
 Removing the M6 screw 2 in the "T" port on the top of main valve is internal drain, installing the M6 screw 2 is external drain.

4、WEH32

1、 Internal pilot and external pilot:
 Installing the M6 screw 1 in the "P" port on the top of main valve is external pilot; removing the M6 screw 1 is internal pilot.

2、 Internal drain and external drain:
 Removing the M6 screw 2 in the "T" port on the top of main valve is external drain; installing the M6 screw 2 is internal drain.

NOTE : 1, The "X" port on the base plate must be plugged if internal pilot.

2, The "Y" port on the base plate must be plugged if internal drain.