

DWG10 SERIES SOLENOID OPERATED DIRECTIONAL CONTROL VALVES

DWG10 series directional control valves are solenoid operated directional spool valves, these valves are used to the start ,stop and direct flow.



4	DWG	10	E	50	/	O	DC24	N	Z4	/	B0.8	V	*
---	-----	----	---	----	---	---	------	---	----	---	------	---	---

3=3-way
4=4-way

Size 10

Spool type

Series 50=50 60=60 Solenoid coils with thread connection

No code=With spring return; O=Without spring return
OF=Without spring return with detent

DC24=DC24V; AC220=AC220V; AC110=AC110V

For further details

No code=NBR seals for petroleum oils
V=FPM seals for phosphate ester

No code=Without orifice insert
B0.8=Orifice size 0.8mm
B10=Orifice size 1.0mm
B12=Orifice size 1.2mm

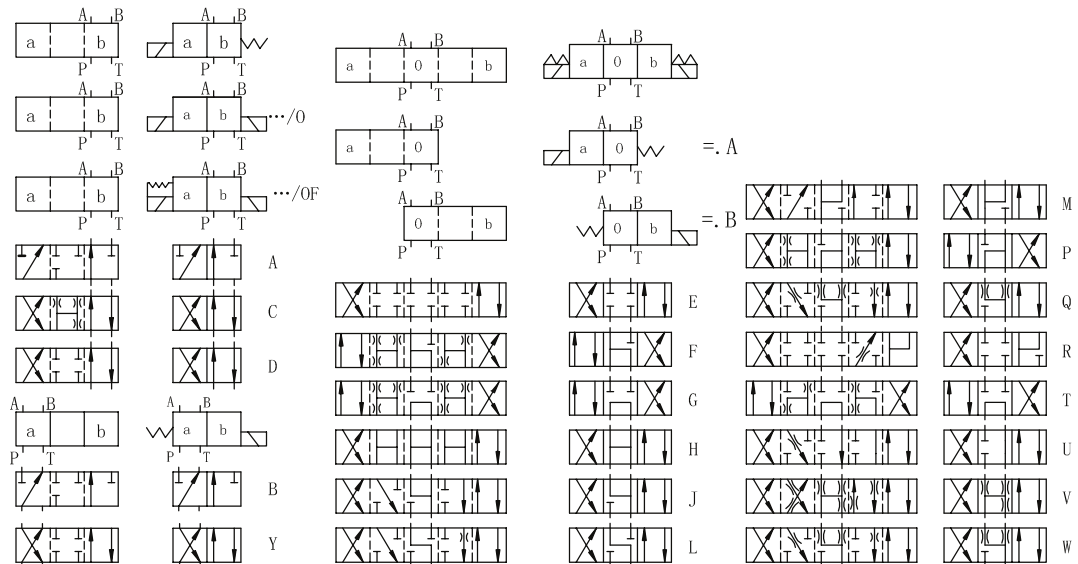
Z4=Quadrate plug; J5=Wire box
Z5L=Large quadrate plug with light

No code=Without manual override
N=With manual override

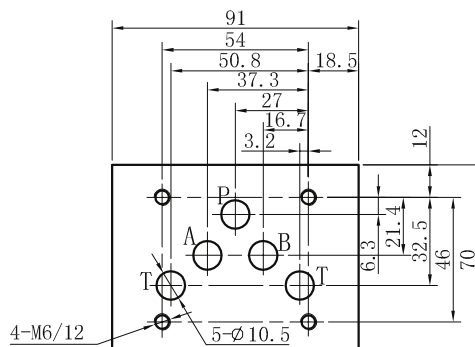
Technical data

Size	10
Max. flow rate(L/min)	120
Operating pressure(MPa)	A、B、P oil port 31.5
	T oil port 16

Spool symbols



4DWG10 Subplate Installation Dimensions



Installations are the same with
 Z1DS10, Z2SD10, Z2FDS10, ZPB10,
 ZPR10