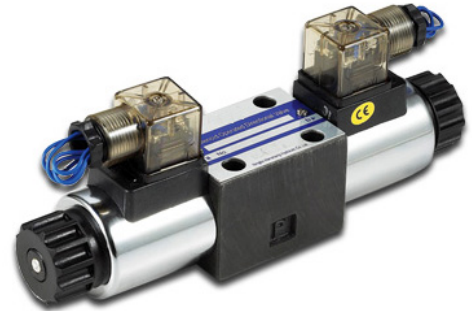


DWG6 SERIES SOLENOID OPERATED DIRECTIONAL CONTROL VALVES

DWG6 series directional control valves are solenoid operated directional spool valves, these valves are used to the start, stop and direct flow.



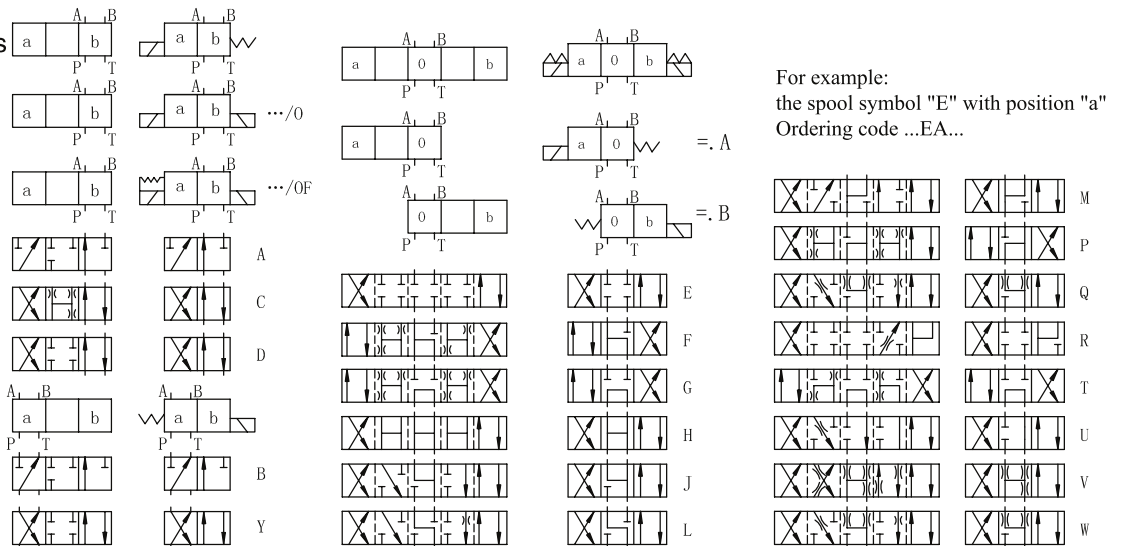
Directional Control Valves

4	DWG	6	E	60	O	DC24	N	Z4	B0.8	V	*
3=3-way 4=4-way											For further details
Size 6										No code=NBR seals for petroleum oils V=FPM seals for phosphate ester	
Spool type										No code=Without orifice insert B08=Orifice size 0.8mm B10=Orifice size 1.0mm B12=Orifice size 1.2mm	
Series 50=50 60=60 Solenoid coils with thread connection										Z4=Quadrate plug; J5=Wire box Z5L=Large quadrate plug with light	
No code=With spring return; O=Without spring return OF=Without spring return with detent										No code=Without manual override N=With manual override	
DC24=DC24V; AC220=AC220V; AC110=AC110V											

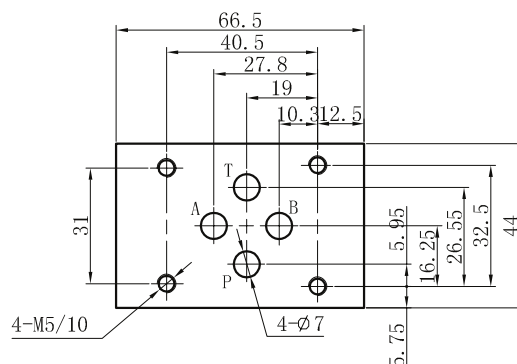
Technical data

Size	6
Max. flow rate (L/min)	60
Operating pressure (MPa)	A, B, P oil port 31.5
	T oil port 16

Spool symbols



4DWG6 Subplate Installation Dimensions



Installations are the same with
Z1DS6, Z2DS6, Z2FDS6, ZPB6, ZPR6